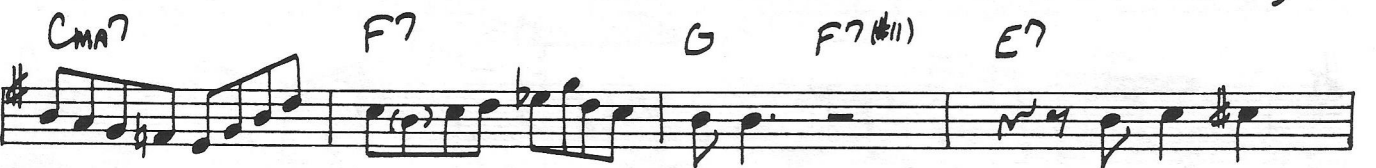
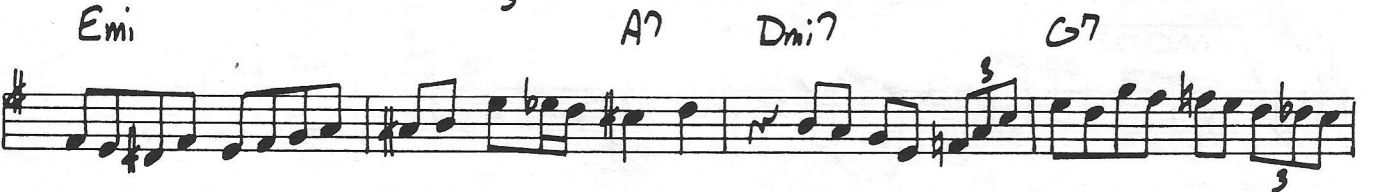
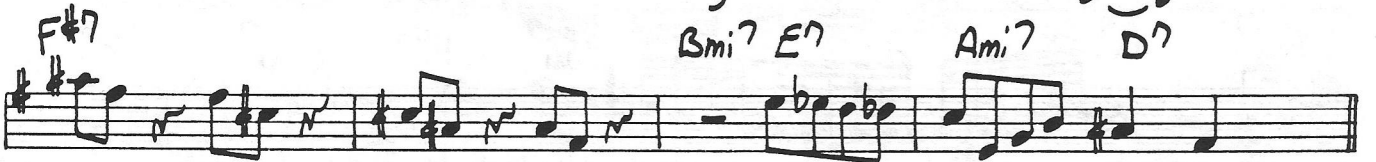
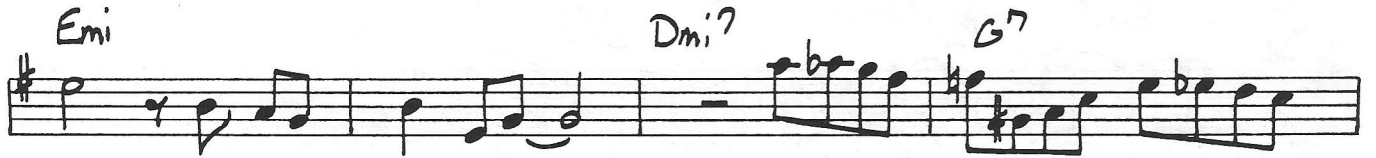


# I'LL CLOSE MY EYES

Blue Mitchell  
Blue's Moods

$\text{♩} = 200$

BREAK G



Ami D7 G

G F#mi7(b5) B7

Emi Dmi7 G7

Cma7 F7 Gma7

F# F#7(b9) Bmi7 E7 Ami7 D7

Gma7 F#mi7(b5) B7

Emi7 A7 Dmi7 G7

Cma7 F7 G F7 E

Ami7 D7 G

G F#mi7(b5) B7

This image shows a handwritten musical score consisting of seven staves of music. The music is written in a treble clef with a key signature of one sharp (F#) and a 4/4 time signature. The notes are primarily eighth and quarter notes, with some triplets and rests. Above the staves, various guitar chords are written in a handwritten style.

**Staff 1:** Emi, A7, Dmi7, G7. Includes a triplet of eighth notes.

**Staff 2:** Cma7, F7, Gma7.

**Staff 3:** F#7, Bmi7, E7, Ami7, D7. Includes a triplet of eighth notes.

**Staff 4:** Gma7, F#mi7(bs), B7.

**Staff 5:** Emi, A7, Dmi7, G7. Includes a triplet of eighth notes.

**Staff 6:** Cma7, F7, G, E7.

**Staff 7:** Ami7, D7, G. Includes a triplet of eighth notes.

OUT CHORUS

Handwritten musical score for "OUT CHORUS" in G major, 4/4 time. The score consists of ten staves of music with various chords and melodic lines.

Chords and notes are as follows:

- Staff 1: G, F#mi7(b9), B7
- Staff 2: Emi, A7, Dmi7, G7
- Staff 3: C, F7, Gma7, 3
- Staff 4: F#7, Bmi7, E7, Ami7, D7
- Staff 5: Gma7, F#mi7(b9), B7
- Staff 6: Emi, A7, Dmi7, G7
- Staff 7: Cma7, F7, G, F7, E7
- Staff 8: Ami7, D7, Gma7